



Important Information

THE CHS SHOP

The Crawley Horticultural Shop in Ifield Avenue, West Green, Crawley (tel. 01293 535585) is open in 2009 from;

10am until 12 noon every Thursday from 10 January–10 December
9.00am until 12 noon every Sunday until 6 December,
9.00am until 12 noon every Saturday from 1 March
until 26 September, and
6.30pm until 8.00pm every Wednesday from 1 April
until 24 June.

NEW MEMBERS

The CHS policy for recruiting new members is by word of mouth by you the members. Why not pass the word about the benefits of membership to like-minded friends and relations. A perfect present for a birthday or special occasion would be CHS gift voucher/token to be spent in the shop, or a membership enrolment for one or four years.

NEXT NEWSLETTER

The next Newsletter will be on the Society's website by early May with printed copies made available for Group Meetings and in the Shop .

Helen Green

100 Malthouse Road, Crawley, RH10 6BH

Telephone 01293 535972

Email—bergreen2003@yahoo.co.uk

Enquiries about the Society should be addressed to the Hon. Secretary, Chrissie Smith—telephone 01293 539221

If you would like to receive your Newsletter by email, please contact the Membership Secretary, Peter Nash on 01293 511919

SUBSCRIPTIONS

Members are reminded that annual subscriptions and four year subscriptions taken out in 2004 expired on 31st December 2008 and should be renewed as soon as possible. Renewals can be made in the Shop or direct to the Membership Secretary, Peter Nash, 65 Millbank, Ifield, Crawley. RH11 0JQ.



January 2009

Crawley Horticultural Society

Newsletter

CHAIRMAN'S MESSAGE

Contents

Chairman's Message

Happy New Year to you all.

Secretary's Message

It's that time of year again. It comes round more quickly every year - so I think we must be getting old.

Trading Report

Show Secretary's Reports

Now its time to look forward to a new gardening year whatever that may bring. Last year was very wet but I hear we may expect a warmer year for 2009.

AGM date

Alpine Group Report

We had excellent support for our Shows last year so well done those who exhibited especially if it was for the first time.

Show Dates

Young Gardener's

Please also support the many groups within the Society - up to date information about meetings, speakers and outings is usually available on the shop notice board.

Website Report

More than Pot Luck

On your behalf, I should like to express thanks to the Committee and Helpers for all their hard work in 2008.

2009 Calendar

Best wishes for 2009.

Group Programmes 2009

Social Committee Report

JOHN GREEN

Barry Morton

DIARY NOTE

Rhubarb, Rhubarb

Plant Sale 16 and 17 May

Information

Bulb Sale 29 and 30 August

A MESSAGE FROM THE SECRETARY

I hope you all had as good a Christmas and New Year as possible. Here we are again, one year ends and a new one begins. Hasn't 2008 gone by in a flash?

2009 could give us all some challenges, with the "Credit Crunch" taking the country by the throat and giving it a hard squeeze, we are all going to feel it in one way or another. All the more reason to make sure you come to the Society shop for all your gardening supplies and all the more reason to grow your own veg.

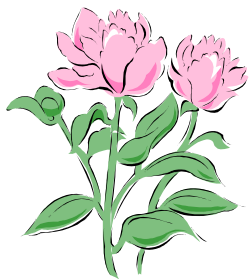
If you don't already attend the Fruit and Veg group, it meets on the 2nd Monday each month. You can get advice, tips and ideas on how, when and where to grow. You don't need a large plot. Container growing is literally growing in popularity. With our prices for seeds and compost, you won't be out of pocket. Go on, give it a go.

The Thursday morning gang kept the garden looking colourful and welcoming and the Walled Garden at Tilgate had lots of admirers, well done to all the workers and keep it going this year. Sadly though, one of the Thursday morning gang, Fred Martin, died suddenly after visiting his sister. He will be greatly missed.

On a brighter note, the hall hire seems to be going quite well, with the Cats Protection League now booked 7 times this year and the Boulevard Florist back for Valentines Day. And we have a new regular hire, the Edwards High Vacuum/BOC retirement club will be with us once a month for their meetings.

Finally can I remind you all to put the AGM in your diaries and calendars, and please come along to the meeting on 26th February. We will have some seats on the committee that need to be filled. New people with New ideas is what's needed. If you want to put your name forward please let me know.

All that is left for me to say is, be as good as you can be, do as much as you can do and the best of health to you all.
CHRISSIE SMITH



2009 PLANT SALE

The annual plant sale will be held in the hall over weekend 16 and 17 May between the hours of 9.0am and 12 noon.

RHUBARB, RHUBARB

We have it with custard, in pies and as a crumble just like any fruit dessert, but is it a fruit? No, strictly speaking the bright red or pink stems are the sweetish stalks of the rhubarb vegetable.

The word rhubarb is thought to come from "Rhu", a local name for the river Volga in Russia where it is grown in abundance. In any event the plant originated from Russia and China where it was used extensively for medicinal purposes. The Chinese rhubarb is still used for gastroenteritis ailments.

The plant we grow in our gardens is a hybrid developed in Europe in the 16th century and was an ornamental garden plant long before it became popular for culinary purposes.

The process of forcing rhubarb is due to a chance discovery by the head gardener of the Chelsea Physic Garden in 1815. He noticed that when the stems were covered in soil they developed a pinkish hue. Presumably he thought these pink stalks looked appetizing and found that when cooked they were quite tasty. Commercial growers began lifting rhubarb and replanting it indoors in long low wooden sheds which became a feature of the landscape. Young stems of rhubarb are still picked in these sheds by candlelight to prevent losing the pink colour. It is said that you can even hear the shoots growing.

The area around Wakefield, Bradford and Leeds became known as the rhubarb triangle in the nineteenth and early twentieth centuries because of the ideal growing conditions and at its height there were over 200 producers. During the second world war with imported fruit virtually unobtainable, the Government kept the price of rhubarb low to make up for the loss of essential vitamins. After the war with exotic fruits back in the shops, rhubarb became less popular and the number of growers in the rhubarb triangle fell to a mere dozen.

PETER ARMSTRONG

SOCIAL COMMITTEE REPORT 2008 (cont)

You can bring your own bottle if you wish, but please take it, and any rubbish you have, away with you when you leave, as we do not have any refuse collection facilities at the Hall.

The Committee thank Mabel for all the organization she does for each event; Albert for preparing and printing all the paperwork; Frank and Iris who do the clearing and washing up; also we thank all those who help set up, clear and clean the Hall; those who prepare and serve the refreshments - most of which is donated; those of you who attend the events and all who donate prizes to save us expense. (HINT: Chocolates and biscuits seem to be very popular with the teams, especially if given in sets of six!)

If you have any appropriate unwanted gifts that are suitable to be used as Raffle or Table Prizes, have any queries or offers of help, please contact Mabel Clackson on 01293 776583. Prizes, suitably labelled, may be left in the shop or kitchen, for collection by the committee.

SHEILA AND GRAHAM JONES & PETER ARMSTRONG

NEW COMMITTEE MEMBER

Hello, I'm Barry Morton, aka "Arkwright" due to the coat I wear when on shop duty,

I am 52 years old and have been a life member of the Society since 1986. I started working in the shop in May 2007 on Wednesday, Saturday or Sunday, as my job allows as I have worked shifts as a signalman on the railways for the last 36 years.

I was asked if I would like to join the committee by Ron Spraget, which I did being elected at the AGM in 2008.

I have always had a gardening interest having grown up on a diet of Percy Thrower and my dad's allotment in Ifield Green. I have grown cacti since about 12 years old as they have always been a fascination to me. I find working in the shop very rewarding with a great bunch of people. I can recommend it to anybody, especially the bread pudding!

BARRY MORTON

TRADING REPORT

In our Spring Newsletter last year we wrote that our suppliers had informed us of future increases in prices of fertilisers and other products. They suggested price increases of between 3.5% and 30% which seems to have been rather optimistic in view of the following trade prices.

Growmore,

October 2007 - £7.73 October 2008 - £17.62

Fish, blood and bone

October 2007 - £11.89 October 2008 - £21.54

Potash

October 2007 - £16.45 October 2008 - £51.08

One of the reasons given for these increases is the demand from the USA to boost the yield of biofuels. Bark products have also gone up in price due, we are told, to the demand from power stations.

With some difficulty we are still able to purchase stock in bulk and sell at less than the trade price. How long we will be able to do so depends on members using the shop.

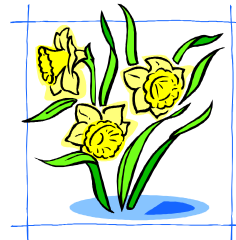
Seed potatoes should be on sale from the first week in February.

New products to our shelves are -

Scotts Bug Clear for Fruit and Vegetables in concentrate and RTU
and Weedol Max RTU.

Best wishes for 2009

PETER COLE



2009 BULB SALE

The annual bulb sale will be held in the hall over the weekend of 29 and 30 August between the hours of 9.0am and 12 noon

SHOW SECRETARY'S REPORTS

SUMMER SHOW

Although the weather was not as good as it could have been, many of you found some lovely specimens to exhibit. The roses were especially good, but sadly no-one entered the Franklin Rose Bowl class. The perennials were also very good and Joan Thrift continued her winning streak with the C D Wales cup. Well done, Joan!

We could do with more sweet pea and alpine exhibitors. Why not consider giving them a go next year?

I was pleased to see a slight increase in the number of people exhibiting, And hope this continues this year.

AUTUMN SHOW—Week 1

Well, you really exceeded yourselves at this show. We had a total of 35 exhibitors, which is more than we have had since our days at the Hawth. Thank you all so much. It was wonderful to see so many exhibits in the vegetable classes and I hope that more and more of you will enter these classes, especially in these times of economic crisis.

After several years of having no entries in the John Bass Cup we had three this year!

What made it all the more special was that the weather was absolutely atrocious and so many of you made the effort to exhibit and come to see the show. Thank you all very much.

AUTUMN SHOW—Week 2

Once again exhibitor numbers were in the early thirties, and I hope this trend is going to continue in 2009. You seemed to like the introduction of apple pies in the domestic classes. We had eight entries and nearly ran out of room to display them all!

Once again, many thanks to you all for exhibiting and coming to see the shows. It makes all our hard work worthwhile.

CHRISTINE MARTIN

ANNUAL GENERAL MEETING

The Annual General Meeting of the Society will be held in the Hall on Thursday 26 February 2009 commencing at 7.45pm.

THE ORCHID GROUP

All meetings are on the 3rd Sunday of the month from 2.30 to 4.30, unless otherwise listed.

January	AGM
February	A talk on orchid culture by Laurence Hobbs
March	Flower arranging with orchids by David Jones
April	Spring Show (13.30 to 16.00)
May	No meeting
June	Orchids of Slovenia by Mike Penney (2 nd Sunday)
July	To be advised
August	Orchid related quiz
September	To be advised
October	To be advised
November	Autumn Show (13.30 to 16.00)
December	Xmas get together

SOCIAL COMMITTEE REPORT 2008

We all take for granted the use and the facilities of the Horticultural Hall for our meetings and shows, probably without realising how it is all funded, particularly as the income from our shop is far less than it used to be. Hence, the Society's Management Committee has a Social Sub-Committee that runs a few social functions for members, partly for fun, but mainly to raise money for the Society in order to defray the huge cost of running the Society's premises and the Groups.

During 2008 we ran four quizzes (in March, May, October and November) and one Beetle Drive (July) directly for the benefit of the Society, one quiz on behalf of a group who hired the Hall (April) and our annual quizzes for the charity *Cancer Research UK* (January and December). All have been greatly enjoyed and very well attended, with each quiz raising about £350.

Two dates for quizzes have been booked, so far, for 2009 - Saturday 25th January and Saturday 21st February, both 7:30 pm sharp! Only a few places are left for each date, please speak to Mabel Clackson for tickets (01293 776583). Other dates for social events, yet to be confirmed, will be posted on the notice boards at the Hall.

We try to sell tables in blocks of six seats, but can generally accommodate the odd ones or twos as well. We have a maximum of 16 tables (96 players), so it is always a case of 'first come, first served'. In order to plan the refreshments and the seating, anyone booking a place must inform Mabel by the previous Wednesday evening if they will not be attending, otherwise they will be charged full ticket price.

THE COTTAGE GARDEN GROUP

The Cottage Garden Group meet on the first Wednesday of each month. At the time of going to print, the following events have been arranged:

7th January	No meeting
4th February	To be advised
4th March	Phil Evans
1st April	To be advised
6th May	Visit to Leonardslee Garden - date and time to be advised
3rd June Group	Strawberry Summer Supper
1st July	To be advised
5th August	To be advised
2nd September	To be advised
7th October	Autumn Colour garden visit - time date and location to be advised
4th November	To be advised
2nd December	Group Christmas Social Evening

THE FUCHSIA & GERANIUM GROUP

The Fuchsia and Geranium Group meet on the third Wednesday of each month except August and December. At the time of going to print, the following events have been arranged.

February 18	Fuchsia & Geranium Workshop
June 27th(Saturday)	Geranium Show with Summer Show
August 1 (Saturday)	Fuchsia Show
October 21	Dave Vivash—Daffodils

FRUIT & VEGETABLE GROUP

The Fruit and vegetable group meet on the second Monday of each month for illustrated talks and discussion of members problems.

ALPINE GROUP REPORT

The Group had an interesting year in 2008. Not as many speakers on Alpine subjects as we would have liked but it is getting very difficult to get speakers now. We are a friendly group and would welcome more CHS Members to come along to our meetings. We meet on the 3rd Monday each Month with the doors open at 7.45p.m. ready to start the meeting at 8.00p.m.

In January we had James Masters talking about 'Standen' near East Grinstead where he is the Head Gardener. In February we had Trevor Povey talking on 'Tales of the Riverbank' This was about the River Arun and the towns and villages along it's banks. In March I spoke about the 'Plants that I Grow'.

We had our Alpine Show in April and in May we visited Mill Nursery at Hassocks. In June Nigel Gravett showed slides and commented on 'Plants I have Grown'. July saw Harry Townsend 'The Wheelbarrow Man' talking about his walk from north to south of North Island New Zealand a trip of over 800 miles.

August was a general get together and in October Paul Ingwersen spoke about 'Birch Farm Nursery' which sadly closed in November 2008. In November Terry Smale gave a superb talk with excellent pictures of 'Orchids for Alpine Growers'

MICK REED
Chairman

SHOW DATES

The dates for the Shows in 2009 are as follows:

CHS Spring Show	Saturday 4 April
Orchid Spring Show	Sunday 19 April
Alpine Group Show	Monday 20 April
Cactus Group Annual Show	Saturday, 30 May
CHS Summer Show including the Geranium Show	Saturday 13 June.
Fuchsia Show	Saturday August 1
CHS Autumn Shows	Saturdays 12 and 19 September.
Orchid Autumn Show	Sunday 15 November

As we plan to run a Tombola at the second week of the Autumn Show we are requesting donations of suitable items please. These can be dropped off at the shop or can be collected if necessary by Show Secretary, Christine Martin, telephone 01293 882871

All the shows are held in the hall and are open to members and general public from 1.30pm except the Cactus Show which is open from 10.00am.



WANTED—VOLUNTEERS

We are always in need of more helpers in the shop.

If you can spare 3 hours on either a Saturday or Sunday morning at about 6 week intervals your assistance will be greatly appreciated. Besides the company and the free flowing tea and biscuits, you will be entitled to a 10% discount on your own purchases.

The shop is the life blood of the Society and without it the Society would not be able to function. If you can help, please contact Jackie Whiting on 01403 270646 or have a word with the duty committee member in the shop.

THE YOUNG GARDENERS' GROUP

Calling all 'Young' gardeners.

I have been told by some of you that you would like to join in one or more groups but feel that you would be out of place because we are 'too old'!!

Now is a good time to be thinking of starting your own group. I would like you to contact me and let me know what you would like to do if you had a group to go to.

I can help you set up the group and would be happy to organise speakers and presentations. But before we go too far, I need to hear from you so we can see if indeed it would be viable to organise a group meeting.

Please contact me, Chrissie, by email at

groovygranny572002@yahoo.co.uk or phone 01293 539221. I now have an answering machine so if I'm not available you can leave a message. By the way, I'm a very young 50.

CHRISSIE SMITH

THE CACTUS GROUP

The Cactus Group meets on the first Monday of the month; please note the start time for 2009 is: - doors open 1900 hrs and meeting starts at 1930hrs

5 th January	No Meeting
2 nd February	David Traish Madagascar Table show: Strombocactus Gp, Adromischus Gp Plant in flower
2 nd March	Doug Donaldson The World of Cacti Table show:: Neoportaria Gp, Haworthia Gp Plant in flower
6 th April	Derek Tribble Extreme Plant Hunting in Namibia 2007 Table show: Rebutia Gp, Sanseviera Gp, Plant in flower
4 th May	Paul Klaassen What I Did Last Winter Table show: Melocactus Gp, Gasteria Gp, Plant in flower
Saturday 30 th May	Annual Show C.H.S. Hall
1 st June	Chris Davies Mexico 2005, Puebla to Oaxaca Table show: Echinocereus Gp, Caudiciform succulent. Plant in flower
6 th July	Cliff Thompson My trips abroad 2008/9 Table show: Parodia Gp, Euphorbia, Plant in flower
August	No Meeting
7 th September	John Hughes To LaQuiaca Or Villazon (Cacti in N Argentina) Table show: Cristate/variegated cactus, Cristate variegated succulent, Plant in flower
5 th October	Peter Down S. American Cacti For Flowers Table show: Gymnocalycium Gp, Asclepidaceae. Plant in flower
2 nd November	John Watmough, Succulent Humour Table Show: Espostoa Gp, Gasteria
7 th December	AGM—Sales Table & Social

THE GROUP PROGRAMMES FOR 2009

Except where otherwise stated, the Groups meet throughout the year in the Hall on weekday evenings at 8.00 pm.

THE ALPINE GROUP

The Group meets on the third Monday of each month as follows:

January 19th	Pleiones—Mick Reed
February 16 th	John Withall with 'Roving Around Britain'
March 16th	To be advised
April 20th	Alpine Show Judge - Martyn Flint
May 18th	Visit to Mill Nursery
June 15th	To be advised
July 20th	To be advised
August 17th	To be advised
September 21st	To be advised
October 19th	To be advised
November 16th	To be advised
December 21st	AGM and Social evening

THE BONSAI GROUP

The Bonsai Group meet on the last Thursday of each month. The programme for 2008 is as follows:

29th January	Workshop re-pot
22nd February	Sunday morning workshop (AGM on Thursday 26th)
26th March	Workshop
30th April	To be advised
28th May	Show preparation
25th June	Workshop
30th July	Speaker or nursery visit
27th August	Member's Show
24th September	A G M plus cheese and wine
29th October	Winter workshop
26th November	Group Christmas Supper
31st December	No Meeting

THE BRIDGE GROUP

We meet every Monday at 1.30pm for beginners and every Friday at 7.15pm for regular players. For further information contact the Chairman John Lake (tel. 01293 527325)

WEBSITE REPORT

2008 was the second year of operation for our website; www.crawleyhorticulturalsociety.moonfruit.com and it surpassed my wildest dreams in popularity. We had well over 4,000 'hits' i.e. people looking at the website, obviously some have revisited the site several times.

There is a page for each of the Groups with their programme for the year and some have pictures of activities they participated in during 2008. There are also pages for the Newsletters, the Shop opening hours for the year and two pages for advertising forthcoming events.

With approximately 180 members now on our email address database, forthcoming shows, bulb and plant sales are sent emails as reminders to these members. Do remember that your membership entitles you to attend all the Flower Shows and Group Meetings without further charge. Any members who haven't registered their email address with the Society can always pop into the shop to get their email address added to the list. Any members with ideas of new attractions that we could add to our website should contact me on telephone no. 01293 420975 or email mick.reed@blueyonder.co.uk.

MICK REED

MORE THAN POT LUCK

Looking round the shows this year, I was concerned for the entries which were in pots. A part of the whole presentation includes the container. Far too many were so dirty the eye was distracted away from the plant.

Whether plastic or clay, first give it a good clean with plain water. When dry, take a rag dampened with cooking oil and apply a thin smear round the pot. It could well raise your chances with the judge.

BERYL ARMSTRONG

CHS CALENDAR—2009

				Monday 15	Alpine Group	8.00pm
				Wednesday 17	Fuchsia Group	8.00pm
				Wednesday 24	Wednesday shop last day	
January	Sunday 18	Orchid Group AGM	2.30pm	Thursday 25	Bonsai Group	8.00pm
	Saturday 25	Quiz Night	7.30pm	July	Wednesday 1	Cottage Garden Group
	Thursday 29	Bonsai Group	8.00pm	Monday 6	Cactus Group	7.30pm
February	Monday 2	Cactus Group	7.30pm	Monday 13	Fruit & Veg Group	8.00pm
	Wednesday 4	Cottage Garden Group	8.00pm	Wednesday 15	Fuchsia Group	8.00pm
	Monday 9	Fruit & Veg Group	8.00pm	Sunday 19	Orchid Group	2.30pm
	Sunday 15	Orchid Group	2.30pm	Monday 20	Alpine Group	8.00pm
	Monday 16	Alpine Group	8.00pm	Thursday 30	Bonsai Group	8.00pm
	Wednesday 18	Fuchsia Group	8.00pm	August	Saturday 1	Fuchsia Show
	Saturday 21	Quiz Night	7.30pm	Wednesday 5	Cottage Garden Group	8.00pm
	Sunday 22	Bonsai Group Workshop	Shop hours	Monday 10	Fruit & Veg Group	8.00pm
	Thursday 26	SOCIETY A.G.M.	7.45pm	Sunday 16	Orchid Group	2.30pm
March	Monday 2	Cactus Group	7.30pm	Monday 17	Alpine Group	8.00pm
	Wednesday 4	Cottage Garden Group	8.00pm	Thursday 27	Bonsai Group	8.00pm
	Saturday 7	Saturday shop opens	9.00am -12 noon	Saturday & Sunday 29 & 30	Bulb Sale in Shop hours	
	Monday 9	Fruit & Veg Group	8.00pm	September	Wednesday 2	Cottage Garden Group
	Monday 16	Alpine Group	8.00pm	Monday 7	Cactus Group	7.30pm
	Wednesday 18	Fuchsia Group	8.00pm	Saturday 12	1st CHS Autumn Show	1.30pm
	Thursday 26	Bonsai Group	8.00pm	Monday 14	Fruit & Veg Group	8.00pm
April	Wednesday 1	Wednesday shop opens	6.30pm—8.00pm	Wednesday 16	Fuchsia Group	8.00pm
	Wednesday 1	Cottage Garden Group	8.00pm	Saturday 19	CHS 2nd Autumn Show	1.30pm
	Saturday 4	CHS Spring Show	1.30pm	Sunday 20	Orchid Group	8.00pm
	Monday 6	Cactus Group	7.30pm	Monday 21	Alpine Group	8.00pm
	Monday 13	Fruit & Veg Group	8.00pm	Thursday 24	Bonsai Group	8.00pm
	Wednesday 15	Fuchsia Group	8.00pm	Saturday 26	Saturday shop last day	
	Sunday 19	Orchid Group Spring Show	1.30pm	October	Monday 5	Cactus Group
	Monday 20	Alpine Group Show	8.00pm	Wednesday 7	Cottage Garden Group	8.00pm
	Thursday 23	Bonsai Group	8.00pm	Monday 12	Fruit & Veg Group	8.00pm
May	Monday 4	Cactus Group	7.30 pm	Wednesday 21	Fuchsia Group	8.00pm
	Wednesday 6	Cottage Garden Group	8.00pm	Sunday 18	Orchid Group	2.30pm
	Sunday 10	Orchid Group	2.30pm	Monday 19	Alpine Group	8.00pm
	Monday 11	Fruit & Veg Group	8.00pm	Thursday 29	Bonsai Group	8.00pm
	Saturday & Sunday 16 & 17	Plant Sale In Shop hours		November	Monday 2	Cactus Group
	Monday 18	Alpine Group	8.00pm	Wednesday 4	Cottage Garden Group	8.00pm
	Wednesday 20	Fuchsia Group	8.00pm	Monday 9	Fruit & Veg Group	8.00pm
	Thursday 28	Bonsai Group	8.00pm	Sunday 15	Orchid Autumn Show	1.30pm
	Saturday 30	Cactus Group Show	10.00am	Monday 16	Alpine Group	8.00pm
June	Monday 1	Cactus Group	7.30pm	Wednesday 18	Fuchsia Group	8.00pm
	Wednesday 3	Cottage Garden Group	8.00pm	Thursday 26	Bonsai Group	8.00pm
	Monday 8	Fruit & Veg Group	8.00pm			
	Saturday 13	Summer and Pelargonium Show	1.30pm			
	Sunday 14	Orchid Group	2.30pm			

Some of the Groups do not meet in December. Check with the Group Secretaries